

# SOL850 Laser Marking System

## Complete board handling & Marking solution

A product of *NORTEK AUTOMATION, INC.*



Nortek's SOL850 is the ideal circuit board marking solution, complete with built in de-stacker and re-stacker. By combining board handling with an innovative positioning system the SOL850 provides the highest throughput in the industry. Direct marking eliminates the recurring consumables cost of labels and ink solutions. The laser's durable marks withstand the latest high temperature processes. High resolution, machine-readable codes pack more information in less board space.

## **NORTEK AUTOMATION INC.**

Providing Solutions Through Automation Since 1985

### **WORLD HEADQUARTERS**

15632 Producer Lane, Huntington Beach, CA 92649 USA

Phone (714)895-8590\*Fax (714)895-8039

[www.nortekautomation.com](http://www.nortekautomation.com)

Copyright © 2005 Nortek Automation, Inc. All rights reserved.

### **SALES & SERVICE**

Texas, Illinois, California, U.K., Switzerland, Taiwan, Japan, & Hong Kong

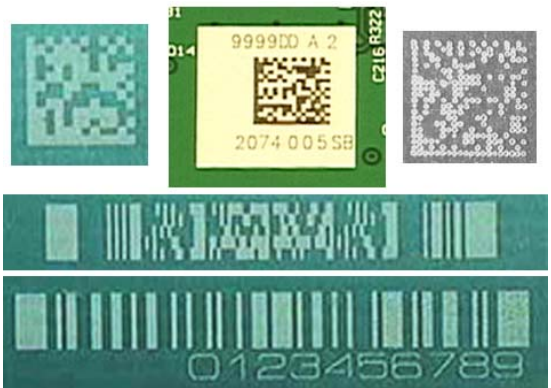
## Features

### **Versatile:**

- Complete handling and marking solution
- Long-life, maintenance free laser
- Traceability; serialization, date/batch codes
- Permanent; barcodes, 2D, graphics
- Smallest system footprint available

### **Productive:**

- Maximum handling/marketing throughput
- Automatic changeover, auto-width adjust
- Every mark is scanned to verify readability
- Simple user interface and programming
- High resolution, machine-readable codes require less board space



## Options

- In-line or batch operation
- X-out Reader, X-out Marking
- Vision verification, OCR
- Network Interface
- Host-database interface software
- No Duplicates - Software that helps you get the right mark on the right product everytime.
- Productivity data logging
- Assembled board, component marking

## Free Evaluation

Send us your product samples and mark requirements for a free evaluation. We'll return your marked samples with a machine readability report (2D, barcode scan), quotation, and cost savings analysis.